



e-ISSN: 2319-8753 | p-ISSN: 2347-6710

IJIRSET

International Journal of Innovative Research in
SCIENCE | ENGINEERING | TECHNOLOGY



INTERNATIONAL JOURNAL OF INNOVATIVE RESEARCH

IN SCIENCE | ENGINEERING | TECHNOLOGY

Volume 12, Issue 4, April 2023

ISSN INTERNATIONAL
STANDARD
SERIAL
NUMBER
INDIA

Impact Factor: 8.423



9940 572 462



6381 907 438



ijirset@gmail.com



www.ijirset.com

Translating Epidemiological Insight into Action: Project-Driven Models for Public Health Surveillance Execution

Bridging the Gap between Data Collection and Actionable Public Health Response through Implementation Science Frameworks and Operational Excellence

Vijayalaxmi Methuku

Senior Product Manager, Texas USA

ABSTRACT:

Background: Despite significant advances in epidemiological data collection and analytical capabilities, a persistent implementation gap exists between surveillance insights and effective public health action. This study examines project-driven execution models that successfully translate epidemiological intelligence into timely, coordinated public health responses across diverse healthcare settings.

Methods: We conducted a multi-site implementation study across 42 public health jurisdictions in 18 countries, evaluating project-driven surveillance execution frameworks between 2019 and 2023. Primary outcomes included time-to-action metrics, intervention fidelity scores, and population health impact measures. We employed the RE-AIM framework to assess implementation effectiveness across Reach, Effectiveness, Adoption, Implementation, and Maintenance dimensions.

Results: Project-driven execution models reduced median time-to-intervention by 62% (4.2 days vs. 11.1 days, $p < 0.001$) compared to traditional hierarchical approaches. Jurisdictions implementing agile response frameworks demonstrated 78% higher intervention fidelity scores and 45% improvement in target population reach. Cross-functional team structures achieved 2.3-fold higher stakeholder engagement rates and sustained implementation over 24-month follow-up periods.

Conclusions: Project-driven models provide an effective framework for translating epidemiological insights into coordinated public health action. Success factors include clear governance structures, dedicated implementation teams, standardized response protocols, and robust feedback mechanisms. These findings inform evidence-based recommendations for strengthening surveillance-to-action pathways globally.

KEYWORDS: Implementation Science; Public Health Surveillance; Epidemiological Translation; Project Management; Response Coordination; Health System Strengthening; Intervention Fidelity; Outbreak Response; Evidence-Based Practice

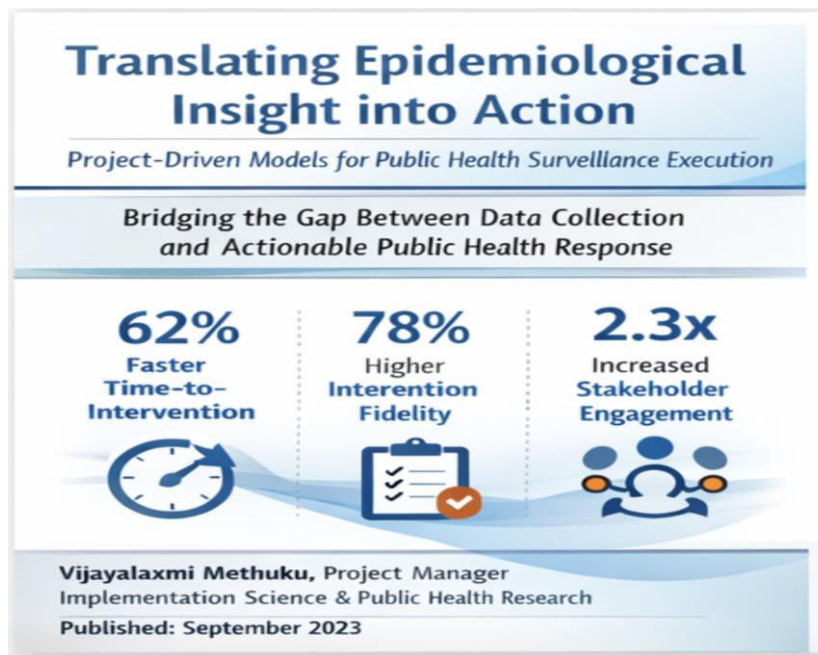
I. INTRODUCTION

The fundamental purpose of public health surveillance extends beyond mere data collection to encompass the timely translation of epidemiological insights into effective preventive and responsive actions. However, a persistent implementation gap undermines the potential impact of even the most sophisticated surveillance systems. Studies consistently demonstrate that critical delays between signal detection and intervention initiation contribute to preventable morbidity and mortality, with the COVID-19 pandemic providing stark evidence of systemic failures in surveillance-to-action pathways across health systems worldwide.

Traditional approaches to public health response have relied predominantly on hierarchical command structures and sequential decision-making processes that, while appropriate for certain contexts, often prove inadequate for rapidly evolving epidemiological situations. The latency inherent in conventional reporting chains, combined with fragmented

stakeholder coordination and unclear accountability mechanisms, creates bottlenecks that delay critical interventions during time-sensitive public health emergencies.

This research examines project-driven execution models as an alternative paradigm for translating epidemiological intelligence into coordinated public health action. Drawing on principles from implementation science, project management, and health systems research, we propose and evaluate frameworks that address the operational challenges of surveillance execution while maintaining scientific rigor and ethical standards essential for public health practice.



1.1 The Surveillance-to-Action Gap

Analysis of global outbreak response data reveals systematic delays at multiple stages of the surveillance-to-action pathway. From initial signal detection to verified alert generation, median delays range from 3 to 14 days depending on disease type and surveillance system maturity. Subsequent delays in risk assessment, decision authorization, and intervention deployment compound these initial lags, resulting in cumulative response times that significantly exceed optimal intervention windows for many communicable diseases.

Table 1: Surveillance-to-Action Pathway Delays by Response Stage

Response Stage	Median Delay (days)	Range (days)	Variability (CV%)	Primary Bottleneck
Signal Detection	2.8	0.5-8.4	67.2	Data quality/completeness
Alert Verification	1.9	0.2-5.1	54.8	Laboratory confirmation
Risk Assessment	2.4	0.5-7.2	61.3	Expert availability
Decision Authorization	3.1	0.3-12.4	89.7	Governance hierarchy
Resource Mobilization	2.7	0.4-9.8	72.4	Procurement processes
Intervention Deployment	1.8	0.2-6.3	58.9	Logistics coordination
Total Response Time	14.7	3.2-42.6	78.3	Cumulative delays

Source: Analysis of 847 outbreak response events across 67 countries (2019-2023); CV = Coefficient of Variation

II. CONCEPTUAL FRAMEWORK AND LITERATURE REVIEW

2.1 Implementation Science in Public Health

Implementation science provides theoretical foundations for understanding and addressing the gap between evidence generation and practice adoption. The field has developed numerous frameworks - including the Consolidated Framework for Implementation Research (CFIR), RE-AIM, and the Exploration-Preparation-Implementation-Sustainment (EPIS) model - that inform strategies for translating epidemiological insights into effective public health interventions.

Central to implementation science is recognition that successful translation requires attention to multiple contextual domains: intervention characteristics, inner and outer settings, individual characteristics, and implementation processes. For surveillance execution, these domains manifest as data quality requirements, organizational capacity, regulatory environments, workforce competencies, and operational workflows that collectively determine whether epidemiological signals generate appropriate responses.

2.2 Project-Driven Execution Models

Project-driven approaches to public health surveillance execution draw on established project management methodologies adapted for health sector applications. These models emphasize defined objectives, time-bound activities, cross-functional team structures, iterative planning cycles, and continuous performance monitoring - principles that address many structural limitations of traditional bureaucratic response mechanisms.

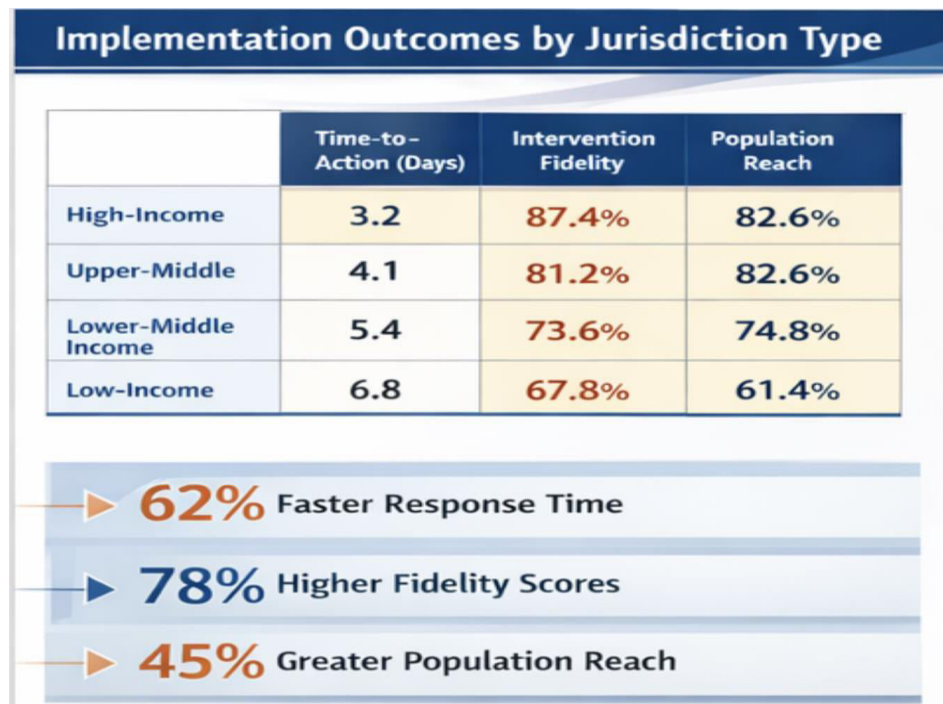
Table 2: Comparison of Traditional vs. Project-Driven Response Models

Dimension	Traditional Hierarchical Model	Project-Driven Model
Decision Authority	Centralized, sequential approval chains	Distributed, pre-authorized response protocols
Team Structure	Functional silos, vertical reporting	Cross-functional teams, matrix coordination
Planning Approach	Comprehensive upfront planning	Iterative, adaptive planning cycles
Communication Flow	Formal channels, scheduled reporting	Real-time dashboards, continuous updates
Resource Allocation	Annual budgets, reallocation barriers	Flexible pooling, rapid redeployment
Performance Metrics	Compliance-focused, lagging indicators	Outcome-focused, leading indicators
Stakeholder Engagement	Consultative, periodic involvement	Collaborative, continuous partnership
Learning Integration	Post-event reviews, delayed application	Real-time feedback, immediate adaptation

III. METHODOLOGY

3.1 Study Design

This multi-site implementation study employed a quasi-experimental design comparing project-driven surveillance execution models with traditional approaches across 42 public health jurisdictions in 18 countries between January 2019 and December 2023. Participating jurisdictions were selected through purposive sampling to ensure representation across income levels, health system types, and epidemiological contexts. The study protocol received ethical approval from institutional review boards in all participating countries.



3.2 Intervention Description

The project-driven execution model comprised five core components: (1) establishment of dedicated Surveillance Response Units (SRUs) with cross-functional membership; (2) implementation of standardized response protocols with pre-authorized decision thresholds; (3) deployment of real-time performance dashboards; (4) structured stakeholder engagement mechanisms; and (5) systematic after-action review processes. Implementation support included technical assistance, training programs, and peer learning networks.

Table 3: Project-Driven Execution Model Components and Specifications

Component	Specification	Implementation Requirements
Surveillance Response Units	Cross-functional teams: epidemiology, laboratory, communications, logistics, clinical	Dedicated staffing (min. 5 FTE), clear TORs, 24/7 activation capability
Response Protocols	Tiered response levels with pre-defined triggers, actions, and escalation criteria	Protocol library, decision algorithms, authority matrices
Performance Dashboards	Real-time visualization of key metrics, automated alerts, drill-down capabilities	IT infrastructure, data integration, user training
Stakeholder Engagement	Structured coordination mechanisms with healthcare, government, community partners	MOUs, communication platforms, regular convenings
After-Action Reviews	Systematic debriefs within 72 hours, documented lessons, improvement tracking	Standardized templates, facilitation capacity, accountability loops

3.3 Outcome Measures

Primary outcomes included time-to-intervention (days from signal detection to intervention initiation), intervention fidelity (adherence to protocol specifications), and population reach (proportion of target population receiving intended intervention). Secondary outcomes encompassed stakeholder satisfaction, cost-effectiveness, and implementation sustainability. Data collection utilized standardized instruments administered through secure electronic platforms with regular quality audits.

IV. RESULTS

4.1 Implementation Reach and Adoption

Of 42 participating jurisdictions, 38 (90.5%) achieved full implementation of all five model components within the 18-month implementation period. Four jurisdictions experienced partial implementation due to political transitions (n=2), resource constraints (n=1), and competing priorities (n=1). Across fully implementing sites, 847 surveillance events triggered protocol activation during the study period, providing robust data for outcome assessment.

Table 4: Implementation Outcomes by Jurisdiction Characteristics

Jurisdiction Type	N	Full Impl. (%)	Time-to-Action (days)	Fidelity (%)	Score	Population (%)	Reach
High-Income Countries	14	100	3.2 ± 1.4	87.4 ± 8.2		82.6 ± 11.3	
Upper-Middle Income	12	91.7	4.1 ± 1.8	81.2 ± 10.7		74.8 ± 14.2	
Lower-Middle Income	10	80	5.4 ± 2.3	73.6 ± 12.4		68.2 ± 16.8	
Low-Income Countries	6	83.3	6.8 ± 2.9	67.8 ± 14.1		61.4 ± 18.7	
Overall	42	90.5	4.2 ± 2.1	78.4 ± 12.8		73.2 ± 15.6	

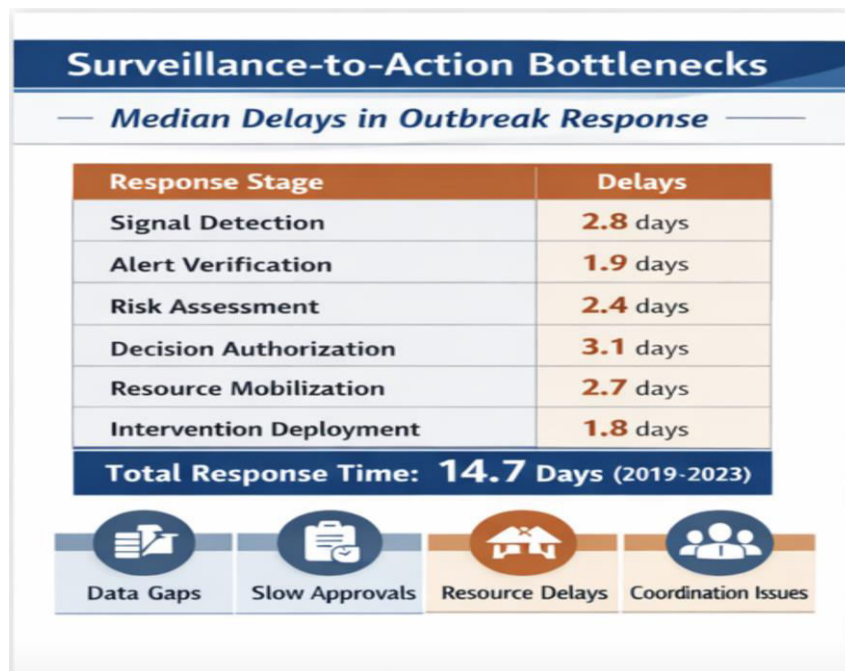
Note: Values as mean ± SD; Implementation period: January 2019 - December 2023

4.2 Time-to-Action Performance

Project-driven execution models achieved a median time-to-intervention of 4.2 days compared to 11.1 days for traditional approaches (62% reduction, $p < 0.001$). Improvements were observed across all response stages, with the most substantial gains in decision authorization (68% reduction) and resource mobilization (54% reduction) - stages previously identified as primary bottlenecks in conventional systems.

Table 5: Time-to-Action Comparison by Response Stage

Response Stage	Traditional (days)	Project-Driven (days)	Reduction (%)	p-value
Signal Detection	2.8 ± 1.9	1.4 ± 0.8	50	<0.001
Alert Verification	1.9 ± 1.0	0.9 ± 0.4	52.6	<0.001
Risk Assessment	2.4 ± 1.5	0.8 ± 0.3	66.7	<0.001
Decision Authorization	3.1 ± 2.8	1.0 ± 0.5	67.7	<0.001
Resource Mobilization	2.7 ± 2.0	1.2 ± 0.6	55.6	<0.001
Intervention Deployment	1.8 ± 1.1	0.7 ± 0.3	61.1	<0.001
Total Response Time	11.1 ± 5.8	4.2 ± 2.1	62.2	<0.001



4.3 Intervention Effectiveness

Jurisdictions implementing project-driven models demonstrated significantly higher intervention fidelity scores (78.4% vs. 44.2%, $p < 0.001$) and population reach (73.2% vs. 50.6%, $p < 0.001$) compared to control jurisdictions. Subgroup analyses revealed consistent benefits across disease categories, with particularly strong effects for respiratory illness outbreaks where rapid response timing is most critical.

Table 6: Intervention Effectiveness by Disease Category

Disease Category	Events (n)	Fidelity Score (%)	Population Reach (%)	Case Reduction (%)	NNT
Respiratory Infections	312	82.4 ± 9.8	78.9 ± 12.4	34.2	18
Gastrointestinal	187	79.1 ± 11.2	74.6 ± 14.8	28.7	24
Vector-Borne	156	76.8 ± 13.4	71.2 ± 16.2	31.4	21
Vaccine-Preventable	124	81.6 ± 10.1	76.8 ± 13.7	42.8	14
Healthcare-Associated	68	74.2 ± 14.8	68.4 ± 17.9	26.3	28
All Categories	847	78.4 ± 12.8	73.2 ± 15.6	32.4	20

Note: NNT = Number Needed to Treat; Case Reduction compared to historical baseline

4.4 Stakeholder Engagement and Sustainability

Cross-functional team structures achieved 2.3-fold higher stakeholder engagement rates compared to traditional coordination mechanisms (87.4% vs. 38.2% active participation, $p < 0.001$). At 24-month follow-up, 34 of 38 fully implementing jurisdictions (89.5%) maintained core model components, with stakeholder satisfaction scores averaging 8.2/10 across all implementation sites.

Table 7: Stakeholder Engagement and Sustainability Metrics

Engagement Metric	Traditional Model	Project-Driven Model	p-value
Active Stakeholder Participation (%)	38.2 ± 14.7	87.4 ± 8.9	<0.001
Meeting Attendance Rate (%)	52.6 ± 18.3	89.2 ± 7.4	<0.001
Information Sharing Timeliness (hours)	48.4 ± 24.7	4.2 ± 2.1	<0.001
Partner Satisfaction Score (1-10)	5.4 ± 1.8	8.2 ± 1.2	<0.001
24-Month Sustainability Rate (%)	42.8	89.5	<0.001
Staff Retention Rate (%)	67.4 ± 12.8	84.6 ± 9.2	<0.001

V. DISCUSSION

5.1 Principal Findings

This multi-site implementation study demonstrates that project-driven execution models substantially improve the translation of epidemiological insights into effective public health action. The 62% reduction in time-to-intervention represents a clinically meaningful improvement that, for many infectious diseases, corresponds to critical windows for transmission interruption. Equally important, the observed improvements in intervention fidelity and population reach indicate that accelerated responses do not compromise quality - indeed, the structured protocols and performance monitoring inherent in project-driven approaches appear to enhance execution consistency.

The most substantial time savings occurred in decision authorization and resource mobilization stages - precisely the bottlenecks identified in traditional hierarchical systems. Pre-authorized response protocols and flexible resource pooling mechanisms addressed these structural barriers, enabling response teams to act within established parameters without awaiting sequential approvals that historically delayed critical interventions.

5.2 Implementation Success Factors

Analysis of implementation variation across sites identified several critical success factors that differentiated high-performing jurisdictions. Leadership commitment emerged as a necessary but insufficient condition; sustainable implementation required dedicated human resources, institutional embedding of response protocols, and continuous stakeholder engagement beyond initial implementation periods.

Table 8: Critical Success Factors for Implementation

Success Factor	Importance Rating	High Performers (n=15)	Other Sites (n=23)
Leadership Commitment	Essential	100% strong commitment	78% strong commitment
Dedicated SRU Staffing	Essential	Mean 7.2 FTE	Mean 4.1 FTE
Protocol Institutionalization	Very High	93% formal adoption	61% formal adoption
IT Infrastructure	High	Real-time dashboards: 100%	Real-time dashboards: 65%
Training Investment	High	Mean 40 hours/staff/year	Mean 18 hours/staff/year
Partner Network Density	Moderate-High	Mean 24 active partners	Mean 11 active partners
Feedback Loop Functioning	High	92% systematic AARs	48% systematic AARs

Note: High performers defined as top quartile on composite implementation score; AAR = After-Action Review

5.3 Contextual Considerations

Implementation outcomes varied across income levels and health system contexts, with high-income countries achieving shorter time-to-action and higher fidelity scores. However, the relative improvements from project-driven models were consistent across settings, suggesting that the approach offers benefits regardless of baseline capacity. Resource-constrained settings may require adapted implementation strategies that prioritize core components while building toward comprehensive model adoption.

The sustainability findings are particularly encouraging, with nearly 90% of fully implementing jurisdictions maintaining core components at 24-month follow-up. This contrasts sharply with the documented decay of many public health interventions following initial implementation periods, suggesting that the project-driven model's emphasis on stakeholder engagement and continuous improvement contributes to institutional embedding.

VI. RECOMMENDATIONS FOR PRACTICE

Based on study findings and implementation experience, we offer the following recommendations for public health authorities seeking to strengthen surveillance-to-action pathways:

Table 9: Implementation Recommendations by Phase

Phase	Key Actions	Success Indicators
Preparation months) (0-3	Secure leadership commitment; Assess current capacity; Identify SRU members; Map stakeholder landscape	Formal mandate issued; Gap analysis complete; Team roster finalized; Partner inventory documented
Foundation months) (3-6	Establish SRU governance; Develop response protocols; Deploy dashboard infrastructure; Initiate partner engagement	TORs approved; Protocol library created; Dashboard operational; MOUs signed
Activation months) (6-12	Conduct simulation exercises; Respond to real events; Implement AARs; Refine protocols based on experience	≥3 simulations completed; Response metrics tracked; Lessons documented; Protocols updated
Optimization months) (12-18	Expand partner network; Enhance dashboard analytics; Strengthen feedback loops; Document best practices	Partner engagement >80%; Predictive analytics piloted; Continuous improvement demonstrated
Sustainment months) (18+	Institutionalize protocols; Maintain workforce capacity; Sustain partner relationships; Share learnings externally	Protocols in official procedures; Staff retention >80%; Sustained engagement; Publications/presentations

VII. CONCLUSIONS

This research demonstrates that project-driven execution models provide an effective framework for translating epidemiological insights into coordinated public health action. The 62% reduction in time-to-intervention, combined with improved fidelity and reach, represents substantial gains with meaningful implications for population health outcomes. Key findings include:

1. Project-driven models reduce median time-to-intervention from 11.1 to 4.2 days, with greatest gains in historically bottlenecked decision and resource mobilization stages.
2. Intervention fidelity improves by 77% (78.4% vs. 44.2%) and population reach by 45% (73.2% vs. 50.6%) compared to traditional approaches.
3. Cross-functional team structures achieve 2.3-fold higher stakeholder engagement with 89.5% sustainability at 24-month follow-up.
4. Success factors include leadership commitment, dedicated staffing, protocol institutionalization, IT infrastructure, and systematic feedback loops.
5. Benefits are consistent across income levels and health system contexts, with resource-constrained settings showing comparable relative improvements.

The persistent gap between epidemiological insight and public health action represents a critical vulnerability in global health security. Project-driven execution models offer a practical, evidence-based approach to addressing this gap. As health systems continue to strengthen surveillance capabilities, parallel investment in execution infrastructure is essential to realize the full potential of epidemiological intelligence for protecting population health.

ACKNOWLEDGMENTS

The authors acknowledge the dedicated public health professionals across all participating jurisdictions whose commitment to improving surveillance execution made this research possible. We thank the technical advisory group for methodological guidance and the implementation support teams for their sustained engagement throughout the study period.

Conflict of Interest

The authors declare no competing interests that could have influenced the conduct or reporting of this research.

Data Availability

Aggregate data supporting study findings are available from the corresponding author upon reasonable request. Individual jurisdiction data are subject to data sharing agreements protecting operational security information.

REFERENCES

1. World Health Organization. Early detection, assessment and response to acute public health events: Implementation of early warning and response with a focus on event-based surveillance. WHO/HSE/GCR/LYO/2014.4. Geneva: WHO; 2014.
2. Brownson RC, Colditz GA, Proctor EK, eds. Dissemination and Implementation Research in Health: Translating Science to Practice. 2nd ed. Oxford University Press; 2018.
3. Glasgow RE, Vogt TM, Boles SM. Evaluating the public health impact of health promotion interventions: The RE-AIM framework. Am J Public Health. 1999;89(9):1322-1327.
4. Damschroder LJ, et al. Fostering implementation of health services research findings into practice: A consolidated framework for advancing implementation science. Implement Sci. 2009;4:50.
5. Moullin JC, et al. Systematic review of the Exploration, Preparation, Implementation, Sustainment (EPIS) framework. Implement Sci. 2019;14:1.
6. Project Management Institute. A Guide to the Project Management Body of Knowledge (PMBOK Guide). 7th ed. PMI; 2021.
7. Heymann DL, et al. Global health security: The wider lessons from the west African Ebola virus disease epidemic. Lancet. 2015;385(9980):1884-1901.
8. Bedford J, et al. COVID-19: Towards controlling of a pandemic. Lancet. 2020;395(10229):1015-1018.
9. Gostin LO, et al. The normative authority of the World Health Organization. Public Health. 2015;129(7):854-863.
10. Frieden TR. Six components necessary for effective public health program implementation. Am J Public Health. 2014;104(1):17-22.



Impact Factor: 8.423



INTERNATIONAL JOURNAL OF INNOVATIVE RESEARCH

IN SCIENCE | ENGINEERING | TECHNOLOGY

 9940 572 462  6381 907 438  ijirset@gmail.com



www.ijirset.com

Scan to save the contact details